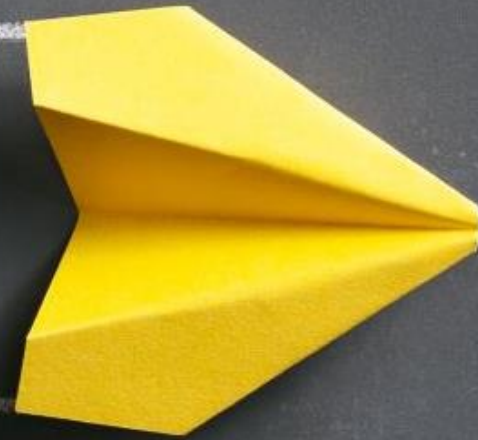


PROMOTING
ENERGY EFFICIENCY &
DEVELOPING
INNOVATIVE APPROACHES
IN SCHOOLS

ΠΡΩΘΗΣΗ ΤΗΣ
ΕΝΕΡΓΕΙΑΚΗΣ ΑΠΟΔΟΣΗΣ &
ΑΝΑΠΤΥΞΗ
ΚΑΙΝΟΤΟΜΩΝ ΠΡΟΣΕΓΓΙΣΕΩΝ
ΣΤΑ ΣΧΟΛΕΙΑ

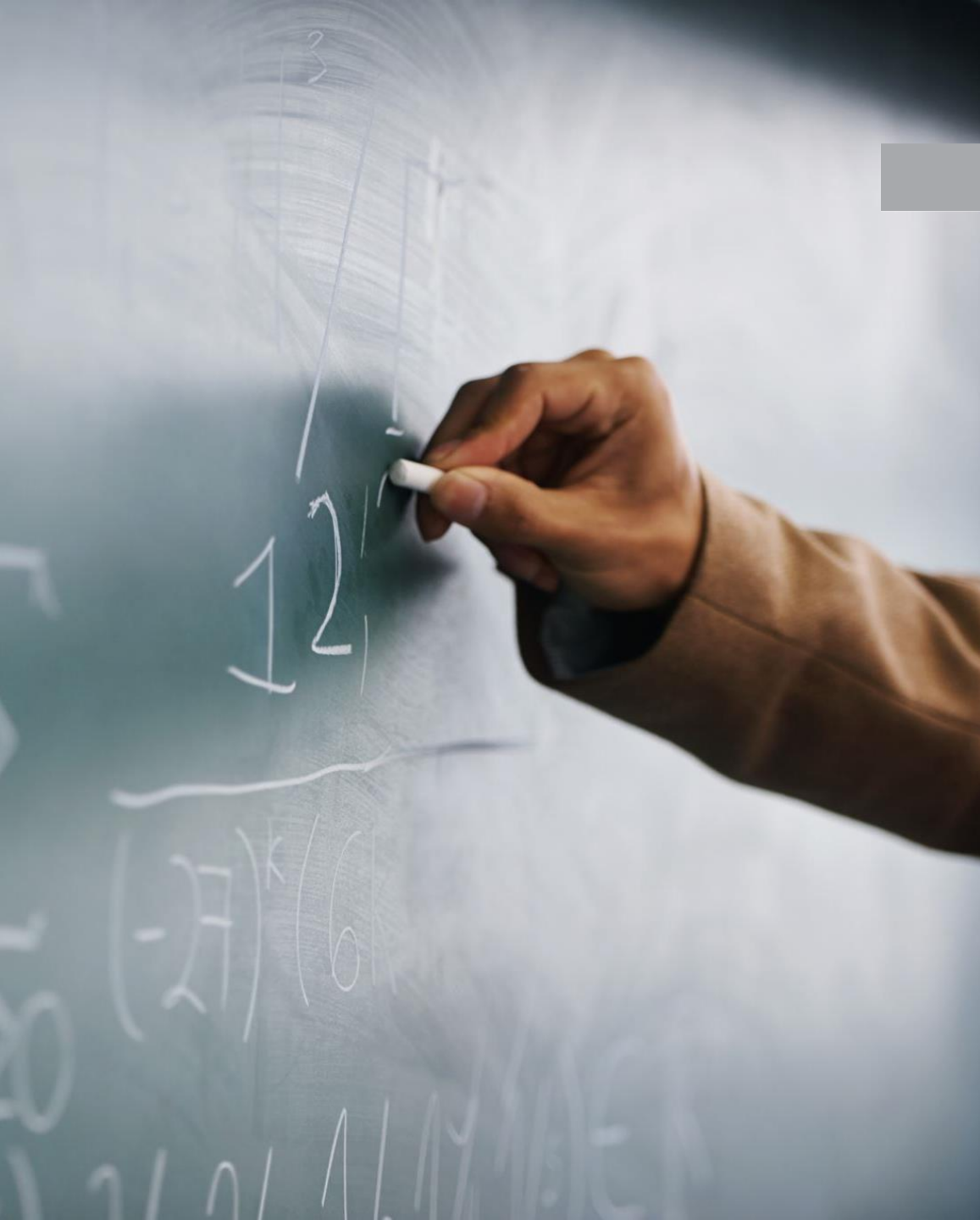


26/11/2020

SAVVAS VLACHOS | PROJECT COORDINATOR



PEDIA




CHALLENGES


The large-scale energy renovation of school buildings contains a high perceived investment risk, while the involvement of several actors results in more complex procedures.

PEDIA

PEDIA project contributes by removing legal, administrative, technical and market obstacles for the energy renovation of public schools.

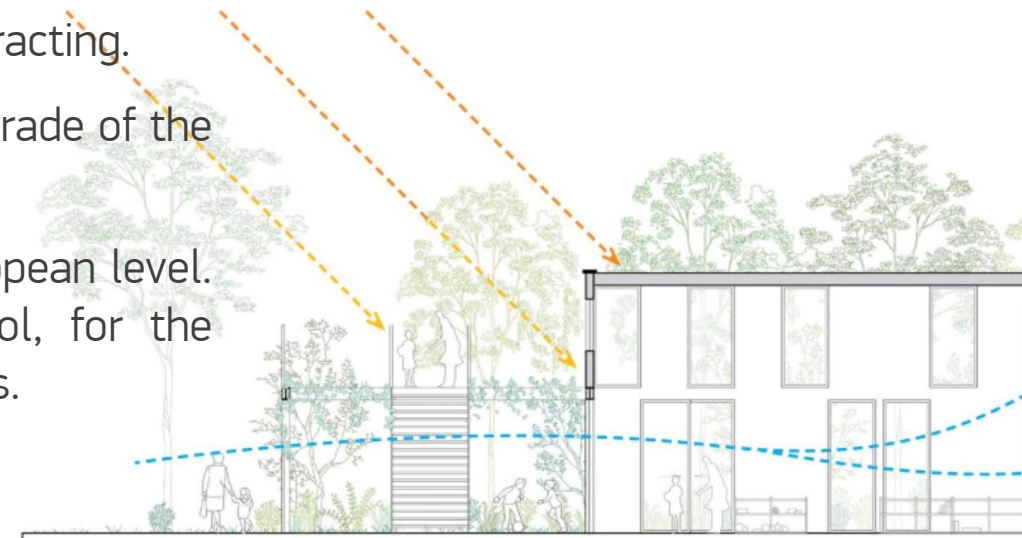


PEDIA introduces a procedural framework for schools' energy upgrade to meet NZEB level, by integrating to the existing renovation practices a selection ranking system, energy audits, Green Public Procurement (GPP), an Energy Management System and an Innovative Financing Solution.



PEDIA AT A GLANCE

- It's the only project in Cyprus that has been selected for a grant as a technical assistance under the Project Development Assistance [PDA] funding, from the European Commission [Horizon 2020]. The total funding is 500,000 €, for 5 years.
- It aims to mobilize 7.5 M € of investments in school buildings.
- It promotes a holistic approach for the energy upgrade of school buildings to the 'Nearly Zero Energy Building' level.
- Pilot implementation of energy upgrades in 25 public school buildings
- Mobilization of private investments through Energy Performance Contracting.
- Development of the MoECSY's long-term strategy for the energy upgrade of the entire school building stock.
- Promotion of the Public School as a lighthouse at National and European level. Utilisation of the Public School as an important pedagogical tool, for the development of environmental and energy awareness and STEM skills.





RANKING TOOL

The ranking system, which is the first part of the methodology, will assist the MoECSY in Cyprus to the selection process of school buildings for energy upgrade, based on **environmental, energy, socioeconomic** criteria.

Assessment Area	Points	Proportion
Construction	130	22%
Added Value	75	13%
Energy	70	12%
School Use and Educational Aspects	65	11%
Electromechanical Systems	55	9%
Social Aspects	45	8%
Users	50	8%
Comfort	35	6%
Renewable Energy Sources	25	4%
Support	20	3%
Location	10	2%
Sustainable Planning	10	2%
Cultural Value	10	2%
Type of School	n/a	n/a
Total available points	600	100%

THANK YOU

Savvas Vlachos | Director
Cyprus Energy Agency
Project Coordinator

2 - 12 Lefkonos Str.
1011 Lefkosia
Tel. +357-22667716
Email: savvas.vlachos@cea.org.cy
Web: www.cea.org.cy

 www.cea.org/pedia/
 [@PEDIA\(@PEDIAeuproject\)](https://www.facebook.com/PEDIA(@PEDIAeuproject))
 [@PEDIA\(@PEDIAeuproject\)](https://twitter.com/PEDIA(@PEDIAeuproject))
 [@pediaeuproject](https://www.instagram.com/PEDIA(@pediaeuproject))
 [PEDIA](https://www.linkedin.com/company/PEDIA)



Cyprus
Energy
Agency



This project has received funding from the European Union's Horizon 2020 programme under Grant Agreement No 893938